



An intimate French-style resort with a view on the 15th century castle

Located between Nantes & Vannes, half an hour from La Baule

5* Hotel, cottages, Spa, a gastronomic restaurant and a 18-holes golf course

31 ROOMS & SUITES | 21 VILLAS & COTTAGES

6 CLUB | From 20 to 23 m² - 215 to 247 ft² | King / twin beds | On request: shower and wooden floor | View on the Golf entry or courtyard view

12 SUPERIEURE | From 23 to 32 m² - 247 to 344 ft² | King / twin beds | On request: shower and wooden floor | Connecting room upon availability | Swimming pool, putting or courtyard view

7 DELUXE | From 32 to 42 m² - 344 to 452 ft² | King / twin beds | Bathroom equipped with a bathtub & a shower on request | Wooden floor upon availability | Swimming pool, putting or courtyard view

6 JUNIOR SUITE | From 44 to 52 m² - 473 to 559 ft² | King / twin beds | Bathroom equipped with a bathtub & a shower on request | Wooden floor upon availability | Lake or courtyard view on request

5 VILLAS | From 45 to 60 m² - 484 to 645 ft² | King / twin beds | Bathroom equipped with a bathtub & a shower on request | Two bedrooms upon availability | Private terrace | View on the Golf entry on request

16 COTTAGE | From 16 to 45 m² - 172 to 484 ft² | King / twin beds | Bathroom equipped with a bathtub & a shower on request | Two bedrooms upon availability | Private terrace | Park, golf or forest view



RESTAURANTS



THE MONTAIGU | A GASTRONOMIC RESTAURANT | HIGH-QUALITY PRODUCTS FROM THE LOCAL AREA AND THE SEA | FACING THE LAKE AND CASTLE

THE CLUB | BRASSERIE OPENS ON THE GOLF

THE BAR



BAR DES ECURIES | AN AUTHENTIC SETTING OF THE CASTLE'S FORMER STABLES

MEETINGS AND EVENTS

LAVOIR



LAVOIR ROOM | 120 M² - 1292 FT² | UP TO 34 PAX IN « U » SEETINGS | 90 PAX IN A THEATRE STYLE | 100 PAX FOR A COCKTAIL



CEDRE, RHODODENDRONS AND HORTENSIA ROOMS | 3 ROOMS OF 33 M² - 355 FT² | 12 PAX IN « U » SEETINGS | 80 PAX IN A THEATRE STYLE - OPENNED UP

« LE CLUB »



NANTES AND VANNES ROOMS | TWO MEETING ROOMS - EACH 70 M² - 829 FT² | UP TO 30 PAX IN A « U » | 50 PAX IN A THEATHER STYLE



BRIDGE ROOM | 56 M² - 603 FT² | UP TO 35 PAX FOR YOUR LUNCH OR EXCLUSIVE DINNER

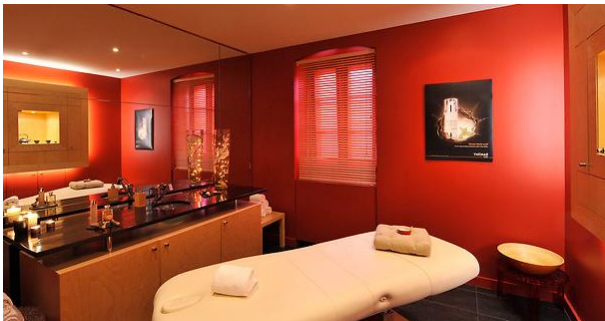
THE GOLF



SET IN THE HEART OF A 234 HA WOODED DOMAIN IS A MAGNIFICENT INTERNATIONAL 18-HOLE GOLF COURSE.

ITS ELEGANT LAYOUT PROMISES TRUE ENJOYMENT FOR BEGINNERS AND SEASONED PLAYERS ALIKE. THE WIDE FAIRWAYS LINED WITH THE FINEST TREE SPECIES, THE TECHNICAL GREENS AND THE HIGH-QUALITY MAINTENANCE MAKE THIS COURSE A REAL GOLFING MASTERPIECE

THE SPA « LA COUR CARRÉE »



THE SPA, WITH ITS CARE COLLECTION SIGNED BY CINQ MONDES AND OMNISENS, OFFER AN EXCEPTIONAL RELAXING EXPERIENCE.

SERVICES



TWO **SWIMMING POOLS** - AN INDOOR OPENED ALL YEAR AND AN OUTDOOR HEATED IN SEASON

AN EXTERIOR **TENNIS COURT**

AVAILABLE **BICYCLES**

A **FITNESS CENTER**

PETANQUE FIELD & MOLKKY

GDS CODES

SABRE **WB30340**
APOLLO/GALILEO **WB54267**
AMADEUS **WBNTEB15**
WORLDSPAN **WBNB15**



Domaine de la Bretesche - 44780 Missillac - France
www.bretesche.com www.bsignaturehotels.com

